

Family: Tiliaceae

Taxonomic Position

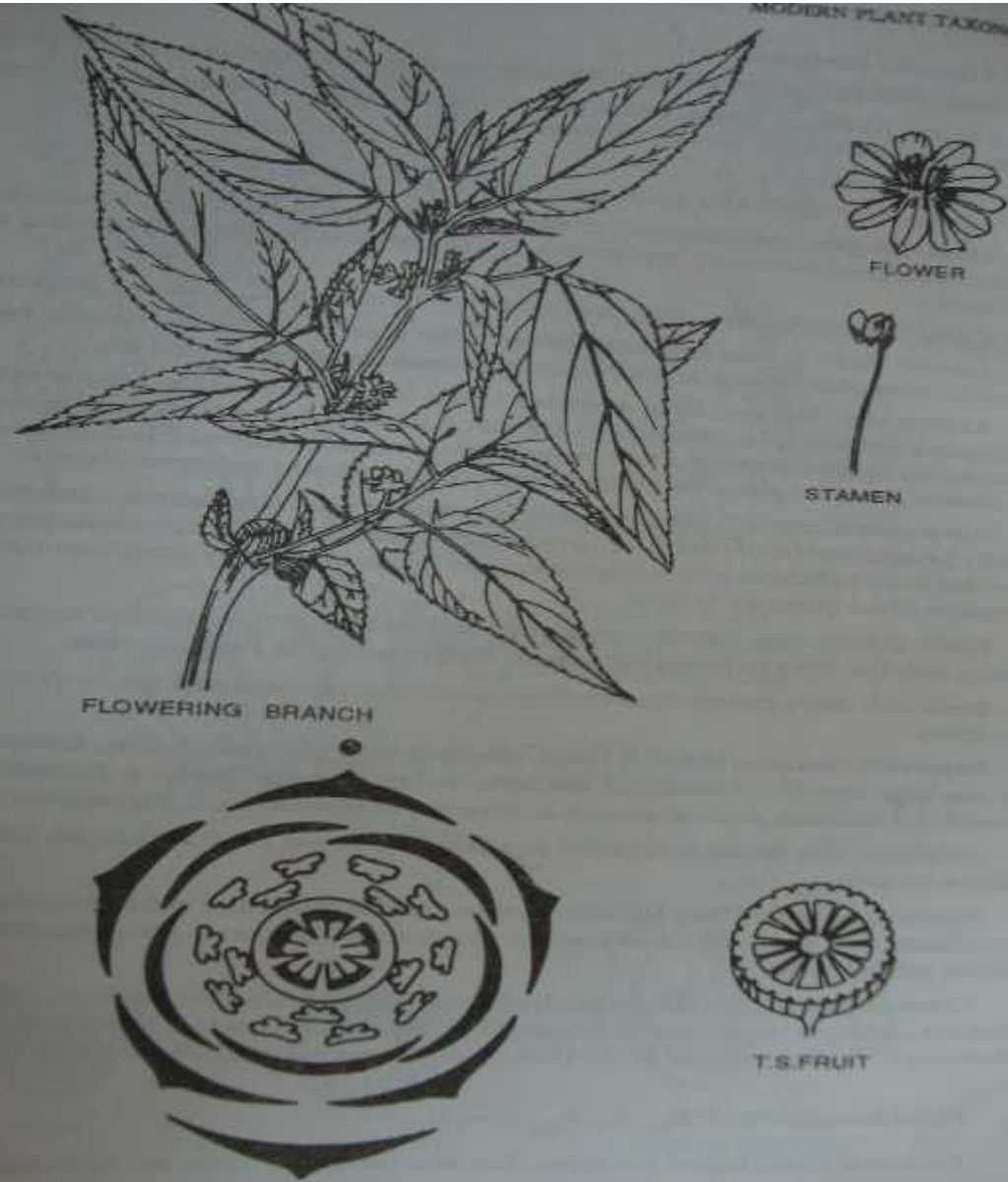
- Kingdom: Plantae
- Division : Magnoliophyta
- Class: Magnoliopsida
- Order: Malvales
- Family: Tiliaceae





Identifying Characters

- Shrub or herb
- Simple stipulated leaves
- Numerous free stamen
- Presence of mucilage substance
- Placentation axile
- Fruit capsule



FLOWERING BRANCH

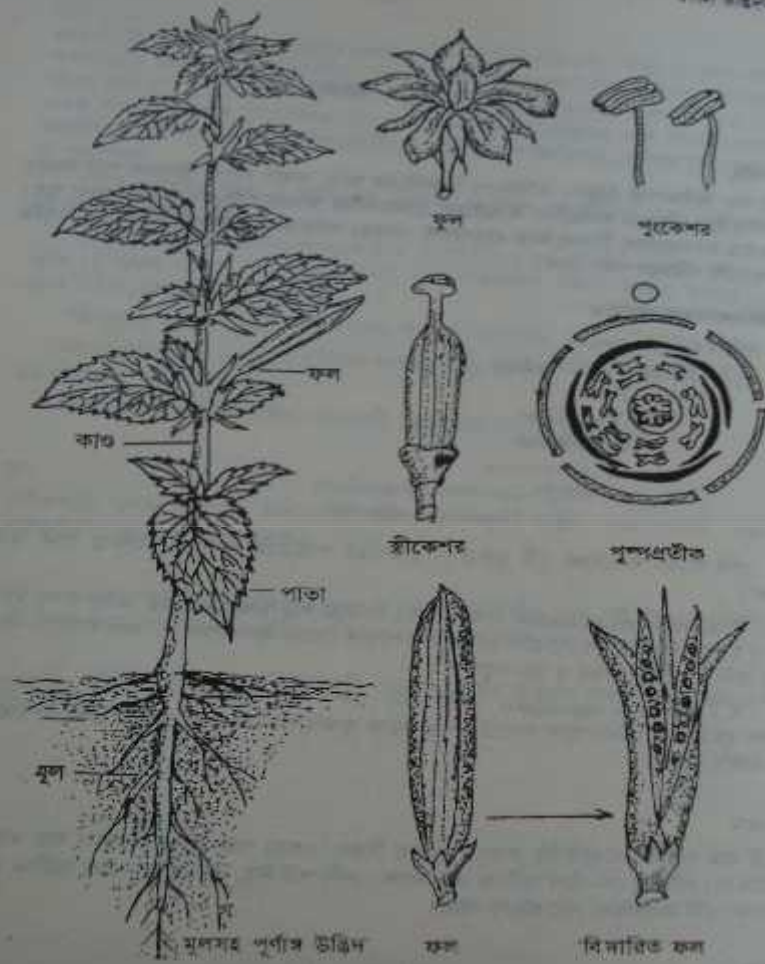
FLOWER

STAMEN

T.S. FRUIT

Br, Brl, @, ♀, K₅, C₅, A_∞, G₍₂₎

Fig. 13.16 Tiliaceae—*Corchorus capsularis* L. (jute).



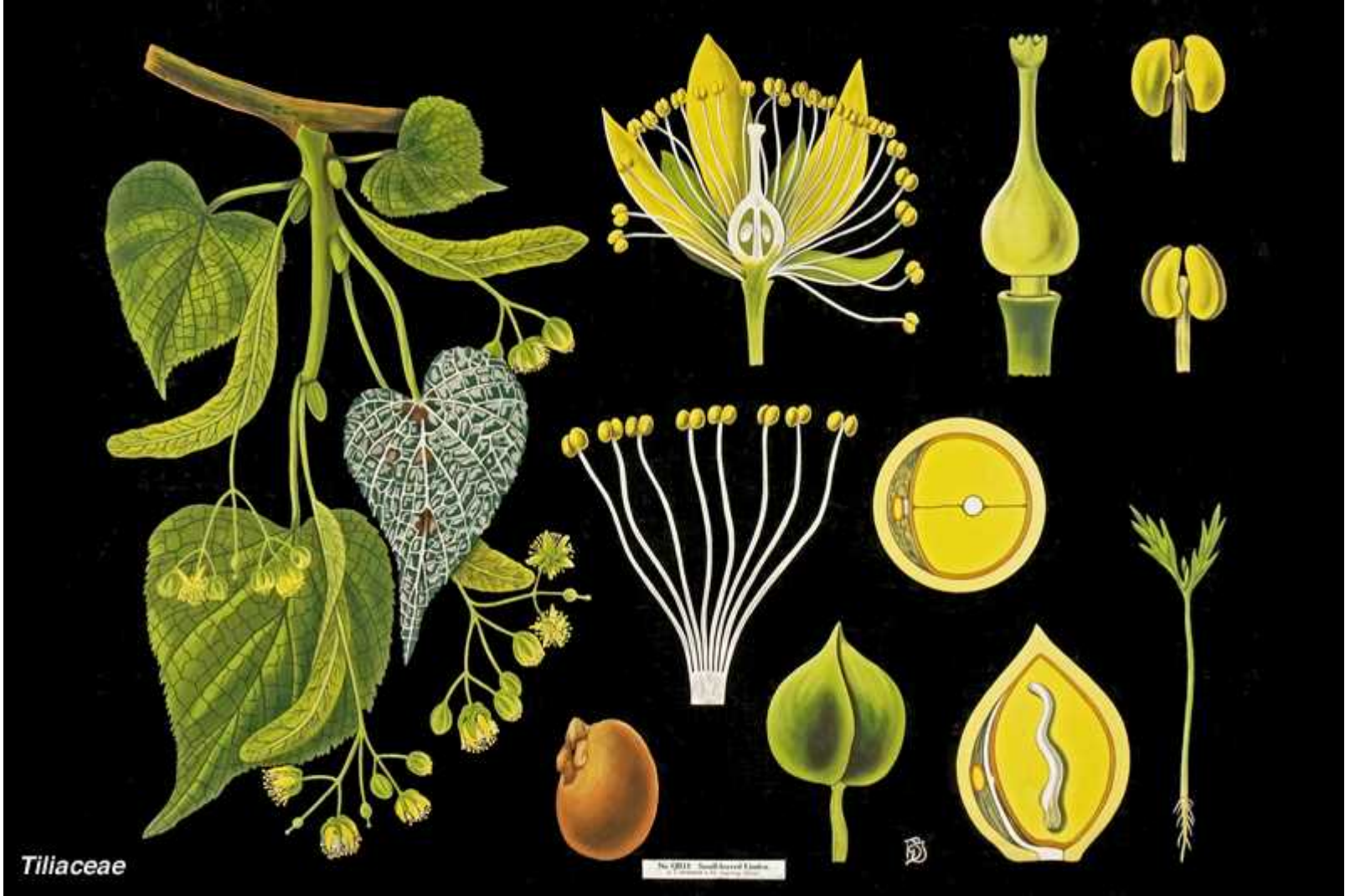
চিত্র ৪.১ : পাট গাছের বাহ্যিক আকৃতিসংস্থান











Tiliaceae

No. 6111 - Small-Sized Flower
The University of California, Berkeley

